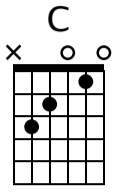


Little May

Boardwalks

Intro



Capo fret 6

Musical notation for the first system of the Intro, including a treble clef, 4/4 time signature, and guitar tablature. The first staff shows a melody starting with a whole note G4, followed by quarter notes A4, B4, and C5. The second staff shows a bass line of quarter notes G2, A2, B2, and C3. The guitar tablature below shows fret numbers 3, 3, 3, 3 for the first four measures, with a 1 on the first string in the fifth measure and a 0 in the sixth measure. The dynamic marking *mf* is present.

Musical notation for the second system of the Intro. The melody continues with a whole note D5, followed by quarter notes E5, F5, and G5. The bass line continues with quarter notes G2, A2, B2, and C3. The guitar tablature shows fret numbers 3, 3, 3, 3 for the first four measures, with a 0 in the fifth measure and a 1 on the first string in the sixth measure. The dynamic marking *mf* is present.

Musical notation for the third system of the Intro, featuring a rhythmic pattern of eighth notes. The melody consists of eighth notes G4, A4, B4, C5, B4, A4, G4. The bass line consists of eighth notes G2, A2, B2, C3, B2, A2, G2. The guitar tablature shows fret numbers 3, 3, 2, 3, 3, 2 for the first four measures, with a 1-1 on the first string in the fifth measure and a 0 in the sixth measure. The dynamic marking *mf* is present.

Musical notation for the fourth system of the Intro, including chord diagrams for Am (x02020), F (223332), and C (x02311). The melody continues with eighth notes G4, A4, B4, C5, B4, A4, G4. The bass line continues with eighth notes G2, A2, B2, C3, B2, A2, G2. The guitar tablature shows fret numbers 0, 0, 2, 0, 0, 2 for the first four measures, with a 1-1 on the first string in the fifth measure and a 0 in the sixth measure. The dynamic marking *mf* is present.

Musical notation for the fifth system of the Intro, titled "Gtr 2 Lick". The melody consists of eighth notes G4, A4, B4, C5, B4, A4, G4. The bass line consists of eighth notes G2, A2, B2, C3, B2, A2, G2. The guitar tablature shows fret numbers 5, 8, 5 for the first four measures, with a 5-7 on the first string in the fifth measure and a 5-8 on the first string in the sixth measure. The dynamic marking *mf* is present.

H P H P H P H P

TAB

Verse

C

TAB

TAB

Am F C

TAB

Am F C

TAB

G F C

Guitar chord diagrams for G, F, and C.

0 0 0 0 0 0

0 0 0 0 0 0

3 (0) 2 0

(0) (0) 3 2 3

(3) 1 3

G

Guitar chord diagram for G.

0 0 0 0 0 0

0 0 0 0 0 0

3 3 3 3 3 3

3 3 3 3 3 3

3 3 3 3 3 3

F C Em

Guitar chord diagrams for F, C, and Em.

0 0 0 0 0 0

0 0 0 0 0 0

1-1 1 1-1 1 0-0 0 0-0 0 0-0 0 0-0 0

2-2 3 2 3 0-0 2 0 2 0-0 2 0 2

1 1 1 1 3 3 2 3 3 2 0 0 0 0 0 0 0 0

F C Em

Guitar chord diagrams for F, C, and Em.

0 0 0 0 0 0

0 0 0 0 0 0

1-1 1 1-1 1 0-0 0 0-0 0 0-0 0 0-0 0

2-2 3 2 3 0-0 2 0 2 0-0 2 0 2

1 1 1 1 3 3 2 3 3 2 0 0 0 0 0 0 0 0

F C G

Guitar chord diagrams for F, C, and G.

0 0 0 0 0 0

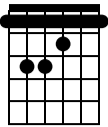
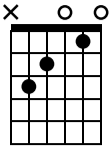
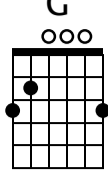
0 0 0 0 0 0

1-1 1 1-1 1 0-0 0 0-0 0 0-0 0 0-0 0

2-2 3 2 3 0-0 2 0 2 0-0 2 0 2

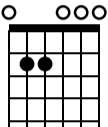
1 1 1 1 3 3 2 3 3 2 3 3 3 3 3 3 3 3

F **C** **G**

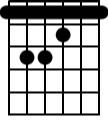
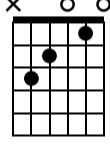
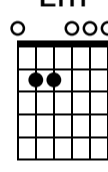
Musical notation for the first system, including a treble clef staff with a 7th fret barre and a bass staff with TAB notation. The TAB notation includes fret numbers 1, 2, 3, and 0 across strings T, A, and B.

Outro
Em



Musical notation for the second system, including a treble clef staff and a bass staff with TAB notation. The TAB notation consists of 0s across strings T, A, and B.

F **C** **Em**

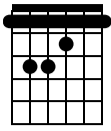




Musical notation for the third system, including a treble clef staff with a 7th fret barre and a bass staff with TAB notation. The TAB notation includes fret numbers 1, 2, 3, and 0 across strings T, A, and B.

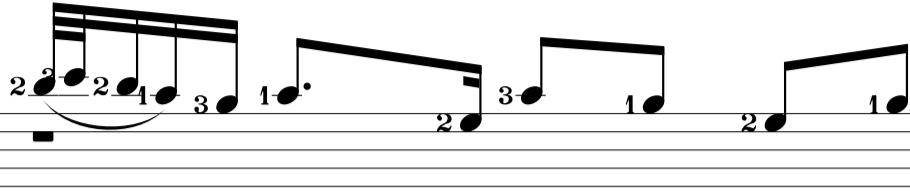
Musical notation for the fourth system, including a treble clef staff and a bass staff with TAB notation. The TAB notation consists of 0s across strings T, A, and B.

Piano Overdub (fades in)

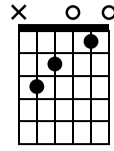
F



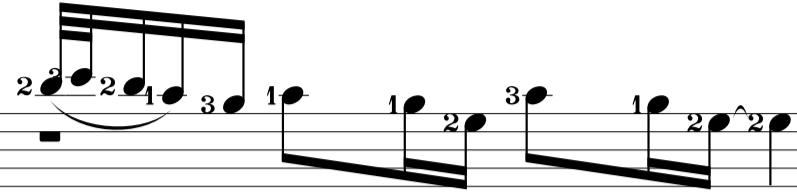
H P



C



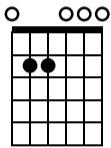
H P



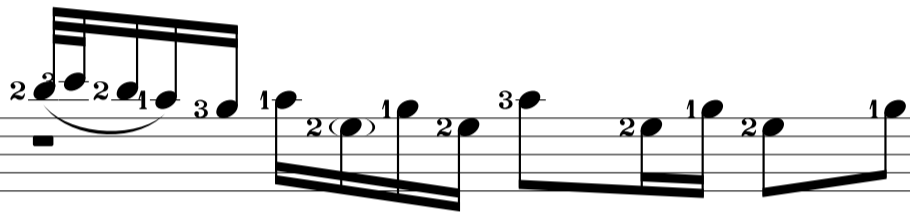
TAB

7-8-7-5 8 5 5 5 3 5 3 | 7-8-7-5 8 5 3 5 5 3 5

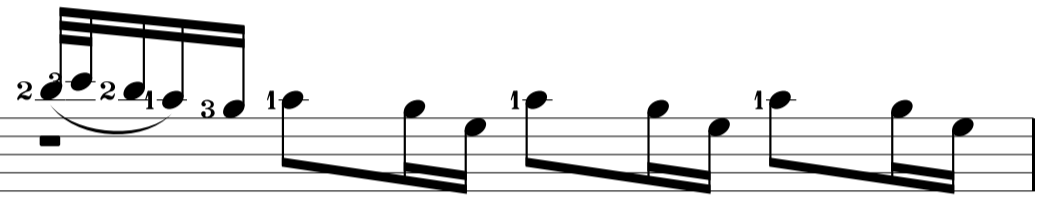
Em



H P



H P



TAB

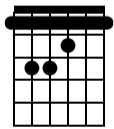
7-8-7-5 8 5 (5) 3 5 5 3 5 3 | 7-8-7-5 8 5 3 5 5 3 5 5 3 5

TAB

5 3 5 5 3 5 5 3 5 | 5 3 5 5 3 5 5 3 5

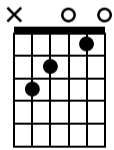
Play a few times instrumental with piano bit added in

F

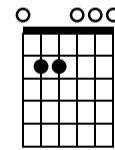


7

C



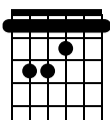
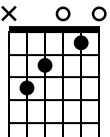
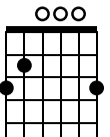
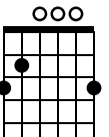
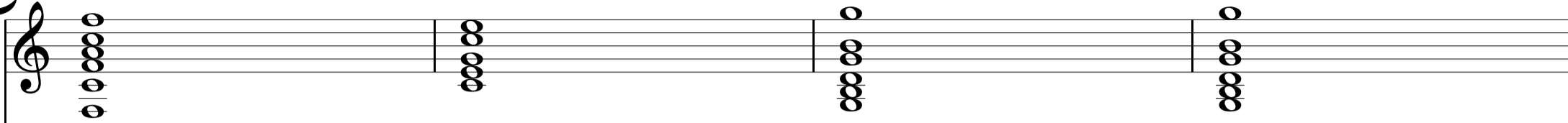
Em

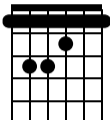
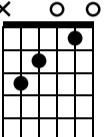
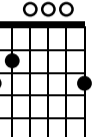

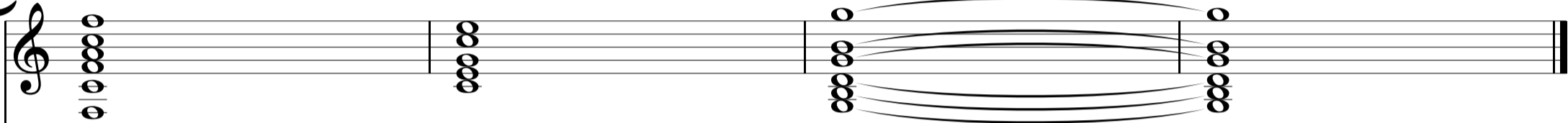


TAB

1 1 2 3 3 1 | 0 1 0 2 3 | 0 0 2 2 0

Outro Chorus to End (Add own strumming pattern)

F	C	G	G
			
			
TAB	TAB	TAB	TAB
1	0	3	3
1	1	0	0
2	0	0	0
3	2	0	0
3	3	2	2
1		3	3

F	C	G	G
			
			
TAB	TAB	TAB	TAB
1	0	3	(3)
1	1	0	(0)
2	0	0	(0)
3	2	0	(0)
3	3	2	(2)
1		3	(3)